

COMTELCO

Technical Specification

A25382WN

806-940 MHz / 1850-1990 MHz

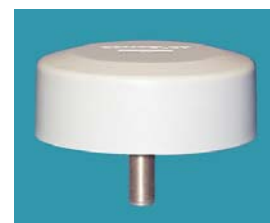
LOW PROFILE ANTENNA

Performance: These antennas provide ultra wideband coverage for ceiling mounted installations or tamperproof bulkhead applications. They operate anywhere in the 806/940MHz and 1850/1990MHz frequency bands. They can be mounted upside down for ceiling applications or conventionally for bulkhead cabinet mounting. They provide better than 3dBi gain. They have a high power handling capacity of 100 watts.

Stylish and Durable: These antennas are manufactured using the finest materials and finishes available. The covers are molded using UV inhibited ABS plastic and are available in a white finish or black finish. When ordered in white they blend in well with existing ceiling tile installations.

Reliable: The termination of these is an "N" type connector for very low loss and easy installation.

Patterns: These antennas provide omni-directional operation with dome like pattern.



ELECTRICAL SPECIFICATIONS:

FREQUENCY RANGE: 806-940MHz
1850-1990MHz
GAIN: >3dBi
VSWR: <2:1 @ 100MHz
IMPEDANCE: 50 ohms
POWER RATING: 100 watts

MECHANICAL SPECIFICATIONS:

BASE: ABS, Ultrasonic brass insert
TERMINATION: "N" Connector termination
HEIGHT: 1 1/2"
DIAMETER: 4 1/4"
COLOR: W - White , B - Black

Vertical Pattern

