

# COMTELCO

## Technical Specification

A2543BN, A2543WN

440-512 MHz 3dB Gain

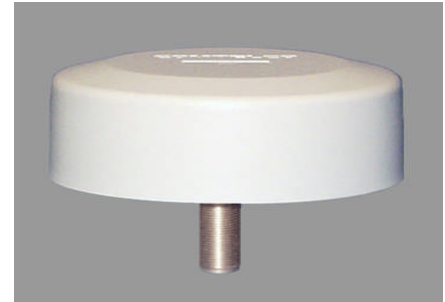
LOW PROFILE ANTENNA

**Performance:** These antennas provide a slightly better than 3dB gain in a design for heavy duty service. They have a power handling capacity of 200 watts. This antenna has a 15MHz band width.

**Stylish and Durable:** These antennas are manufactured using the finest corrosion resistant materials and finishes available. They provide great performance in a low profile package.

**Reliable:** The ABS base has an ultrasonically welded brass insert and a gold plated spring loaded contact for long term reliability.

**Standard Mounting:** These antennas mount with a female type "N" terminaion. They are supplied with a mounting pad that protects any surface finish and provides an excellent moisture seal.



### SPECIFICATIONS:

**FREQUENCY RANGE:** 406-420MHz  
420-435MHz  
440-450MHz  
450-465MHz  
465-480MHz  
480-495MHz  
490-512MHz

**BANDWIDTH:** 15 MHz  
**GAIN:** 3dB  
**VSWR:** <2:1  
**IMPEDANCE:** 50 ohms  
**POWER RATING:** 200 watts  
**RADOME:** UV Stabilized ABS  
**BASE:** ABS, Ultrasonic brass insert  
**CONTACT:** Gold plated spring loaded contact  
**HEIGHT:** 1 1/2"  
**MOUNTING:** Type "N" Female Termination  
**DIAMETER:** 4 1/4"  
**FINISH:** B - Black  
W - White

### Vertical Pattern

