

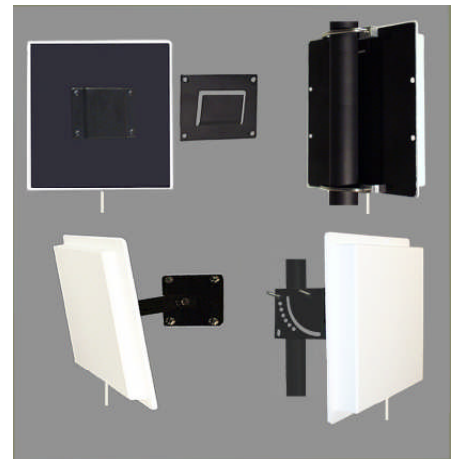
5.725 - 5.925 GHz 14 dBi

5.8 GHz PANEL ANTENNA

Performance: Directional 4 element planar array antenna for the 5.725 thru 5.925MHz band providing 14 dBi gain.

Stylish and Durable: These antennas are manufactured using low loss high deposition printed circuit board material. Heavy plating and total conformal solder mask coating provide exceptional performance at up to 100 watts. A rugged UV inhibited ABS radome with a powder coated aluminum mounting plate provide a robust and stylish package. All 26 Series are supplied with a 12" pigtail.

Mounting: Multiple mounting options are available. These include standard Slip mount, V-Bolt with V-Block, Indoor swivel mount and Heavy duty outdoor universal swivel mount.



ELECTRICAL SPECIFICATIONS:

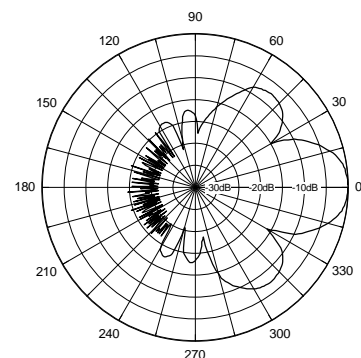
| | |
|--------------------------|-----------------------|
| FREQUENCY RANGE: | 5725-5925MHz |
| GAIN: | 14 dBi (12 dBd) |
| FRONT TO BACK: | 20dB |
| VSWR: | 1.5:1 |
| VERT BEAM WIDTH: | 35 deg |
| HORIZ BEAM WIDTH: | 35 deg |
| POLARIZATION: | Vertical / Horizontal |
| IMPEDANCE: | 50 ohms |
| POWER RATING: | 100 watts |

MECHANICAL SPECIFICATIONS:

| | |
|---------------------|---------------------------------|
| RADOME: | ABS, UV |
| COLOR: | Off white |
| TERMINATION: | 12" Pigtail "N" |
| THICKNESS: | 3/4" |
| MOUNTING: | Standard Slip Mount |
| -V | V-Bolt & V-Block |
| -SM | Indoor swivel mount |
| -HDSM | Heavy duty Outdoor swivel mount |

| | |
|-------------------------|-----------------|
| OVERALL SIZE: | 4 1/2" x 4 1/2" |
| FLAT PLATE AREA: | .1406 ft |
| WIND RATING: | 125 MPH |
| WIND LOAD: | 9.5 lbs. |

Horizontal Pattern



Vertical Pattern

