

COMTELCO

Technical Specification

B3697-960

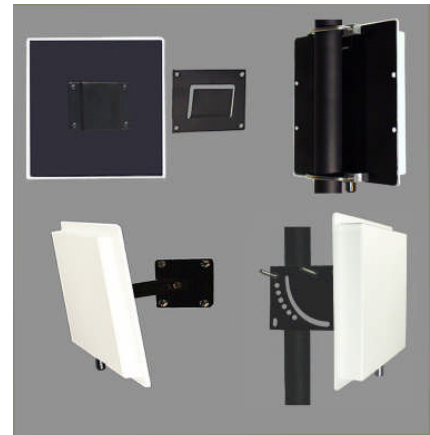
900-960 MHz 7.5 dBi

PANEL ANTENNA

Performance: Directional planar array panel antenna for the 900 thru 960MHz band providing 7.5 dBi gain.

Stylish and Durable: These antennas are manufactured using the finest materials available. They provide great performance in a stylish package. All the plastic parts are molded using UV inhibited ABS material that will give years of service when used inside or outside. The back plate is black powder coated aluminum for excellent durability and mounting stability.

Mounting: Multiple mounting options are available. These include Standard Slip Mount, V-Bolt with V-Block, Swivel Mount or Heavy Duty Swivel Mount.



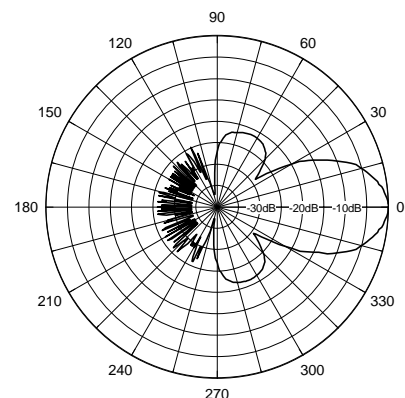
ELECTRICAL SPECIFICATIONS:

FREQUENCY RANGE:	900-960MHz
GAIN:	7.5 dBi (5.5 dBd)
FRONT TO BACK:	20dB
VSWR:	1.5:1
VERT BEAM WIDTH:	65°
HORIZ BEAM WIDTH:	65°
POLARIZATION:	Vertical or Horizontal
IMPEDANCE:	50 ohms
POWER RATING:	100 watts

MECHANICAL SPECIFICATIONS:

RADOME:	ABS, UV
COLOR:	Off white
TERMINATION:	"N" Female
THICKNESS:	1 1/2"
MOUNTING:	Standard Slip Mount -V V Bolt & V-Block -SM Swivel Mount -HDSM Heavy Duty Swivel Mount
OVERALL SIZE:	8 1/2" x 8 1/2"
FLAT PLATE AREA:	.50 ft ²
WIND RATING:	125 MPH
WIND LOAD:	33.8 lbs.

Vertical Pattern



Horizontal Pattern

