

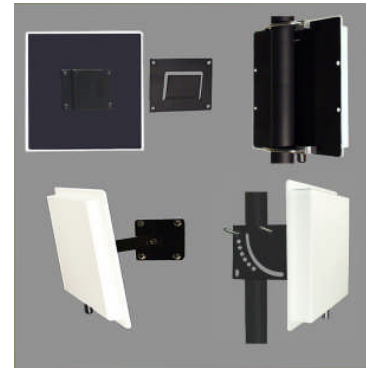
806-960 MHz /1850-1990 MHz 7dBi

DUAL BAND PANEL ANTENNA

Performance: Directional dual band panel antenna providing 7dBi for 806 thru 960MHz and 1850 thru 1990MHz.

Stylish and Durable: These antennas are manufactured using the finest materials available. They provide great performance in a stylish package. All the plastic parts are molded using UV inhibited ABS material that will give years of service when used inside or outside. All aluminum surfaces are powder coated. All mounting hardware is either stainless steel or powder coated.

Mounting: Multiple mounting options are available. These include standard Slip mount, V-Bolt with V-Block, Indoor swivel mount and Heavy duty outdoor universal swivel mount.



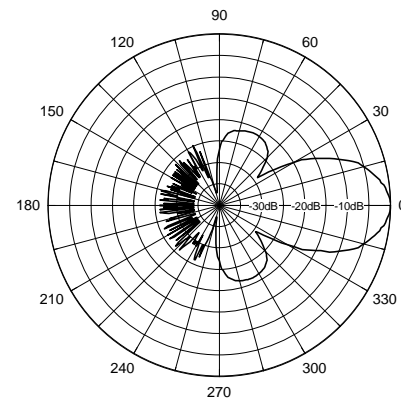
ELECTRICAL SPECIFICATIONS:

FREQUENCY RANGE:	806-960MHz 1850-1990MHz
GAIN:	7 dBi (5 dBd)
FRONT TO BACK:	20dB
VSWR:	<2.0:1
VERT BEAM WIDTH:	50°
HORIZ BEAM WIDTH:	60°
POLARIZATION:	Vertical
IMPEDANCE:	50 ohms
POWER RATING:	100 watts

MECHANICAL SPECIFICATIONS:

RADOME:	ABS, UV
COLOR:	Off white
TERMINATION:	"N"
THICKNESS:	1 1/2"
MOUNTING:	Standard Slip Mount V-Bolt & V-Block Indoor swivel mount Heavy duty Outdoor swivel mount
-V	
-SM	
-HDSM	
OVERALL SIZE:	8 1/2" x 8 1/2"
FLAT PLATE AREA:	.50 ft ²
WIND RATING:	125 MPH
WIND LOAD:	33.8 lbs.

Vertical Pattern



Horizontal Pattern

